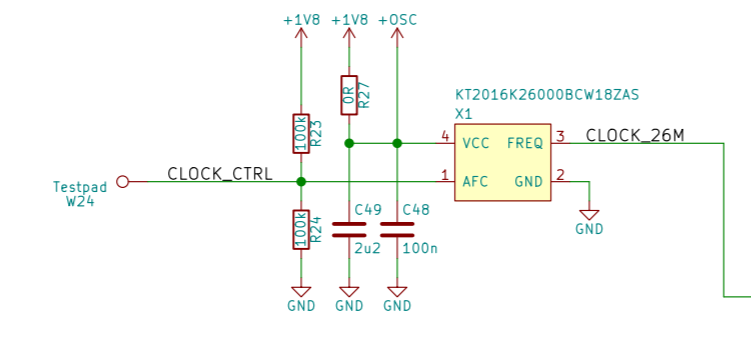
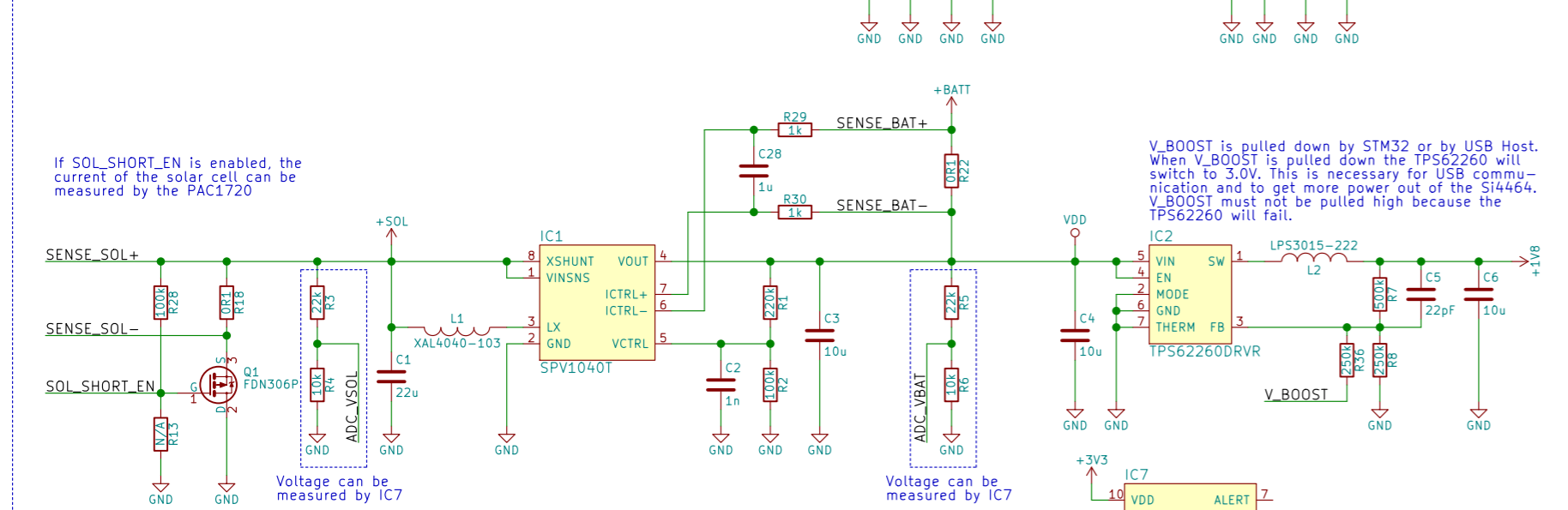


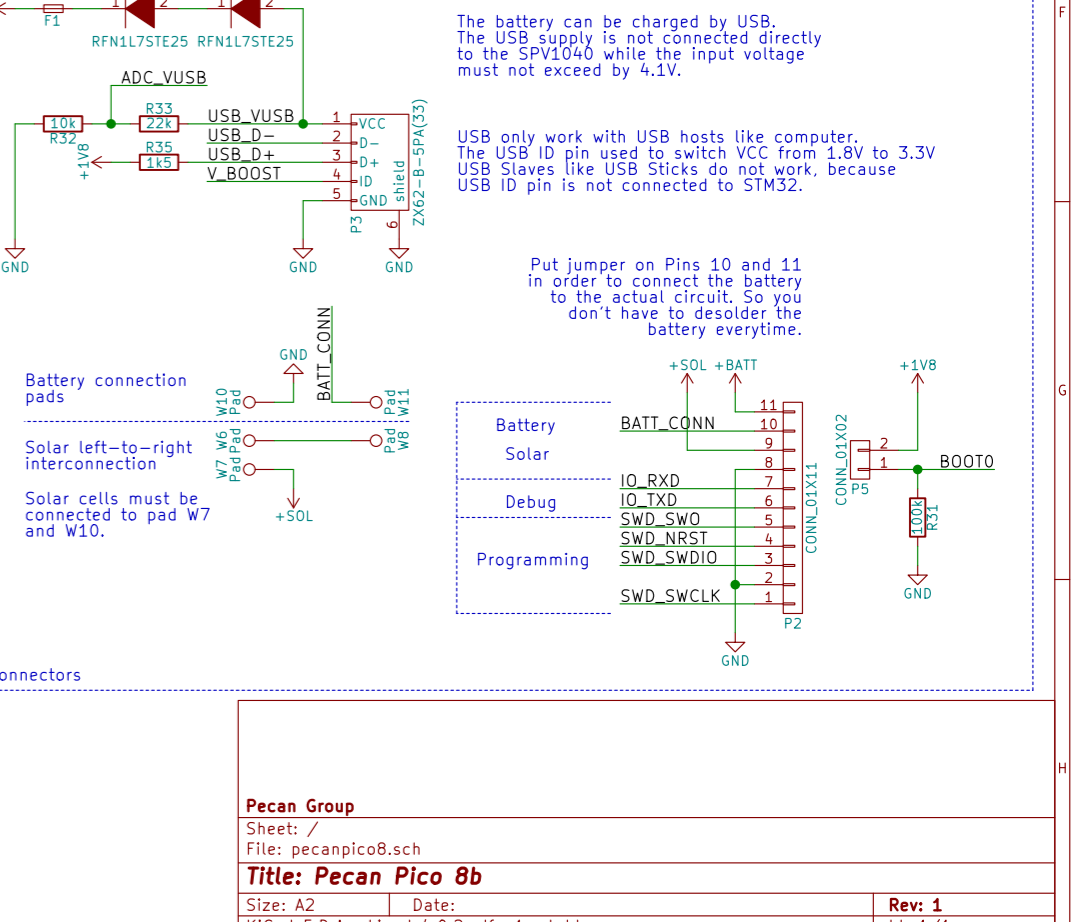
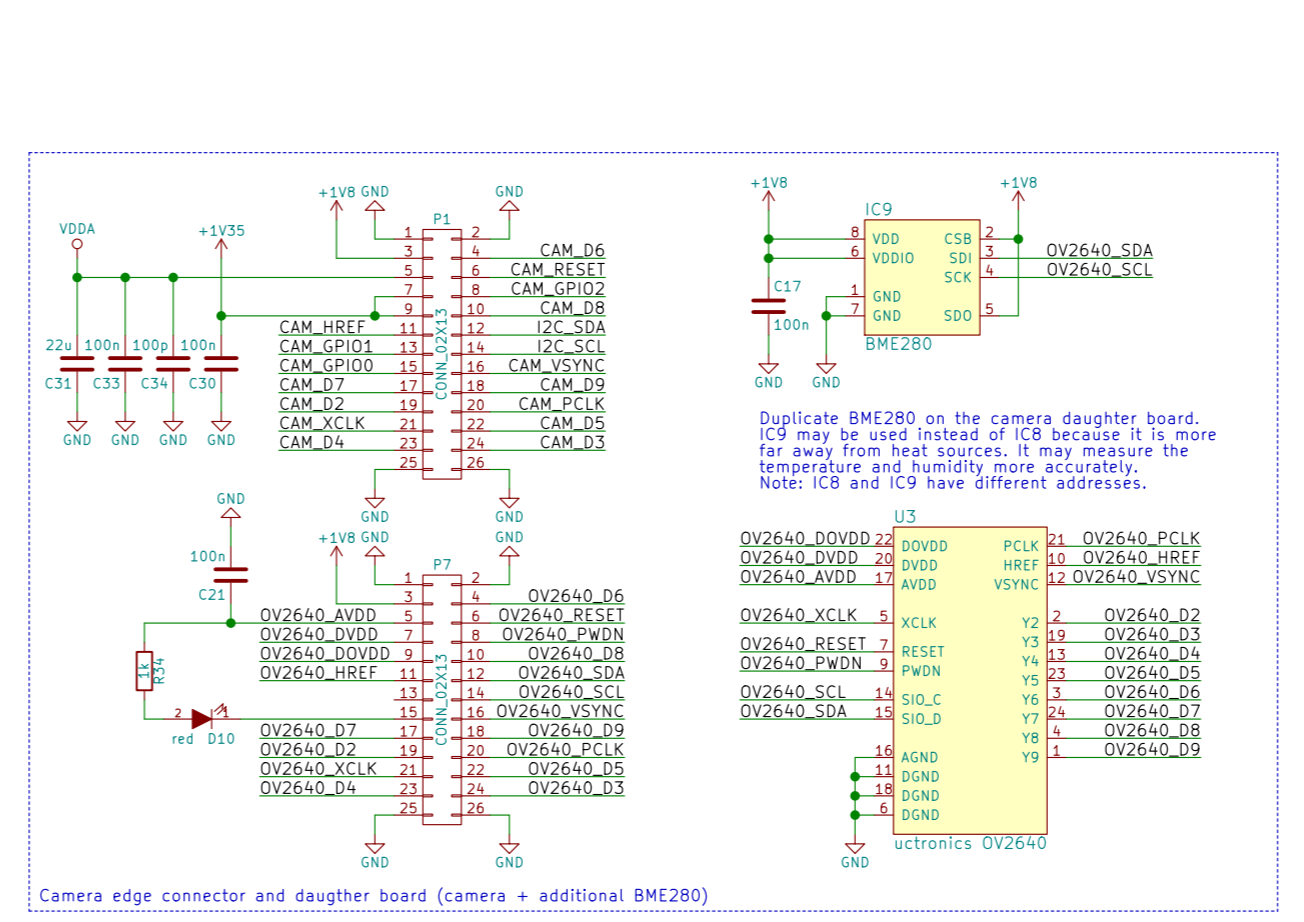
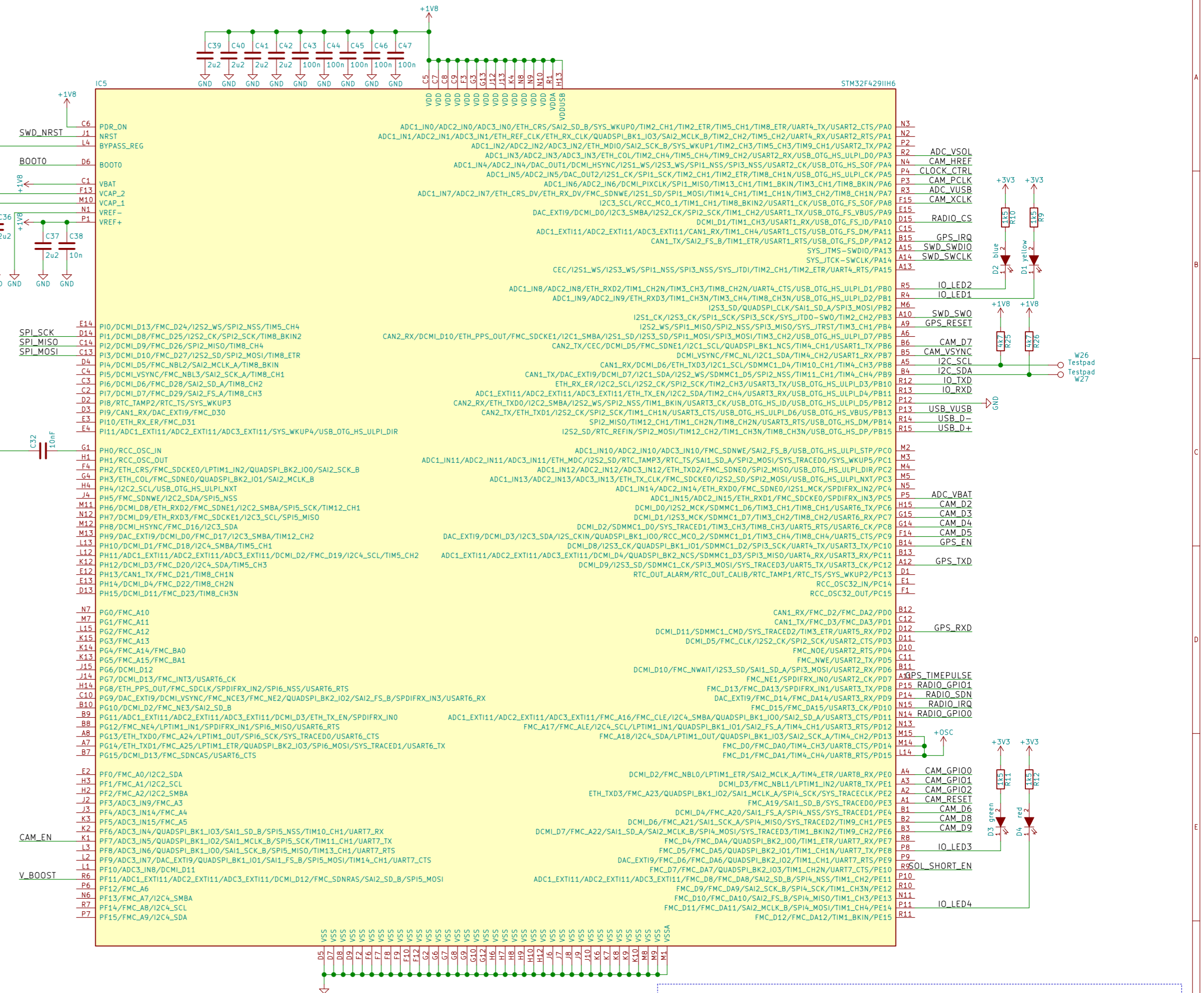
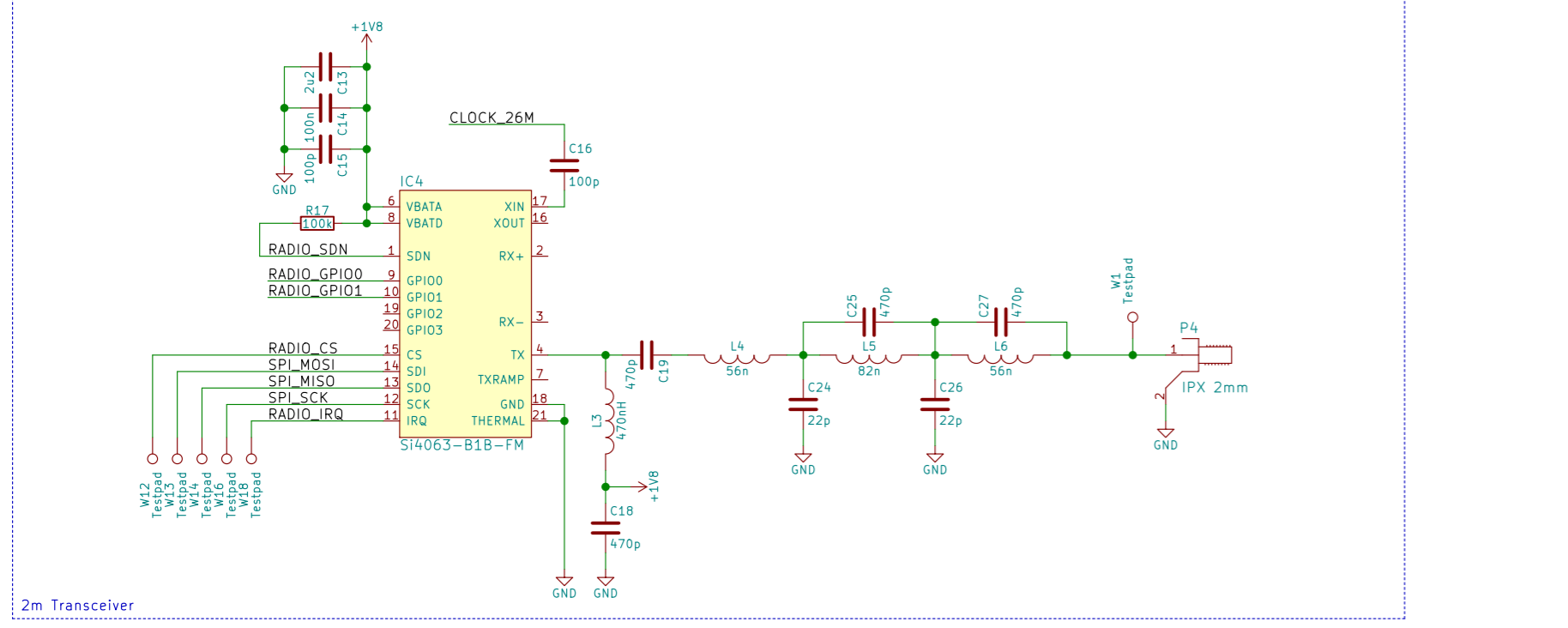
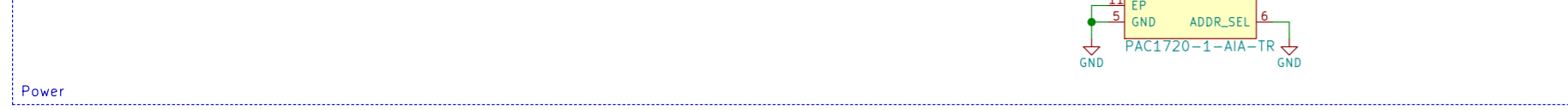
Clock CTRL may be used to modulate the Si4464. It may also influence the clock of the STM32 but only slightly.



+BATT Directly connected to battery
 +SOL Solar network
 VDD Connected to battery through sense resistor
 +1V8 Main power supply for STM32 and transmitter
 +3V3 LED and PAC1720 power supply
 +VDDA Analog power supply for camera
 +1V35 Core power supply for camera (actually 1.8V)



If SOL_SHORT_EN is enabled, the current of the solar cell can be measured by the PAC1720



Pecan Group
 Sheet: /
 File: pecanpic08.sch
Title: Pecan Pico 8b
 Size: A2 Date: /
 KiCad E.D.A. kicad 4.0.2+dfsg1-stable Rev: 1
 Id: 1/1