

GridTracker v1.23.1217

An Amateur Radio Companion

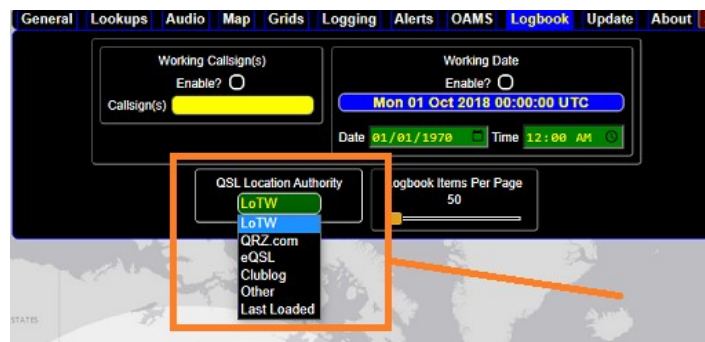
December 17th, 2023

Special Notes

Because of a long standing issue with QSLs from different authorities such as LoTW and QRZ.com providing different locations (Grids, States and US Counties) we made the recommendation that you choose one confirmation source only.

This did not sit well with a few people (angry emails notwithstanding)

We now solve this issue by letting you have as many confirmation sources as you like, however you must now delegate one QSL location authority in Settings → Logbook and the default is LoTW.



We recommend changing this to the authority you are chasing awards for.

“Other” is there in case you're using a logger where GT can't determine the source of the QSL from the log entry.

Version 1.23.1207 was set to “Last Loaded” which means whatever the last QSL loaded into GridTracker is the one it will use for location (Grid, State and US County).

As stated previously this does NOT affect your QSO/QSL counts. Just your Grid, State and US County counts.

We're trying our best here to make sure your have an accurate representation of your logs in GT, please don't resort to personal attacks when you feel slighted that behavior has changed in ways you don't agree with.

Tag / N0TTL

Changelog

- BIGCTY - Update from December 15th
- System - Add QSO processing indicator
- System - QSL location authority selector added in Settings > Logbook
- Logbook Viewer - QSL sources added

- Call Roster - Added Grid to Watcher and Ignores
- Language - Updates to Chinese simplified and traditional translations
- Logging - DX Keeper grid bug workaround

GridTracker is:

Copyright © 2023 Stephen Loomis / N0TTL

Copyright © 2023 GridTracker.org

All rights reserved.

GridTracker uses the OSS compliant BSD 3 Clause License

Source code is available at GitLab: <https://gitlab.com/gridtracker.org/gridtracker>